







CAUTION  
DO NOT OPEN  
THIS PANEL  
WHILE THE  
ENGINE IS  
RUNNING

R-ITC

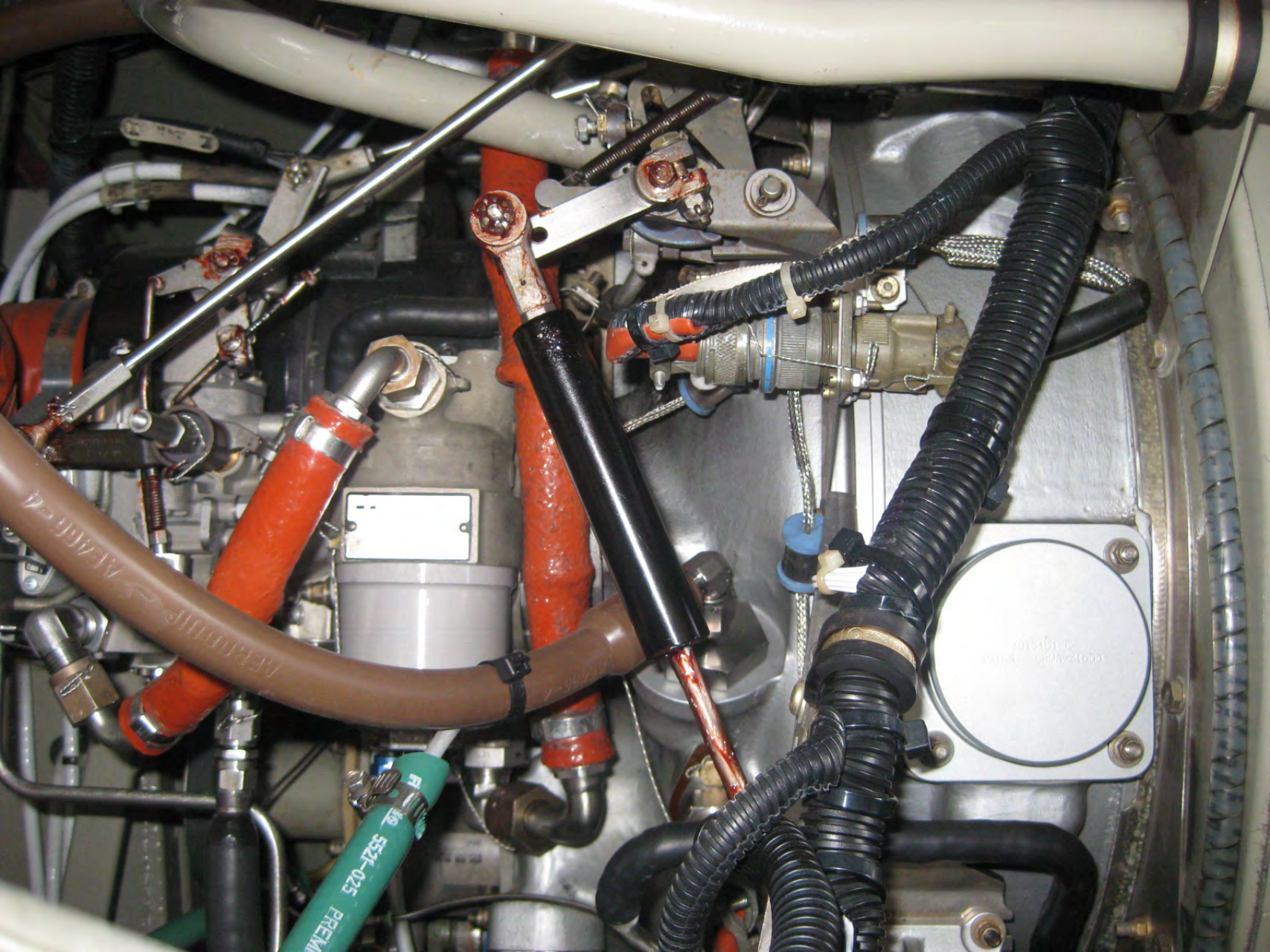


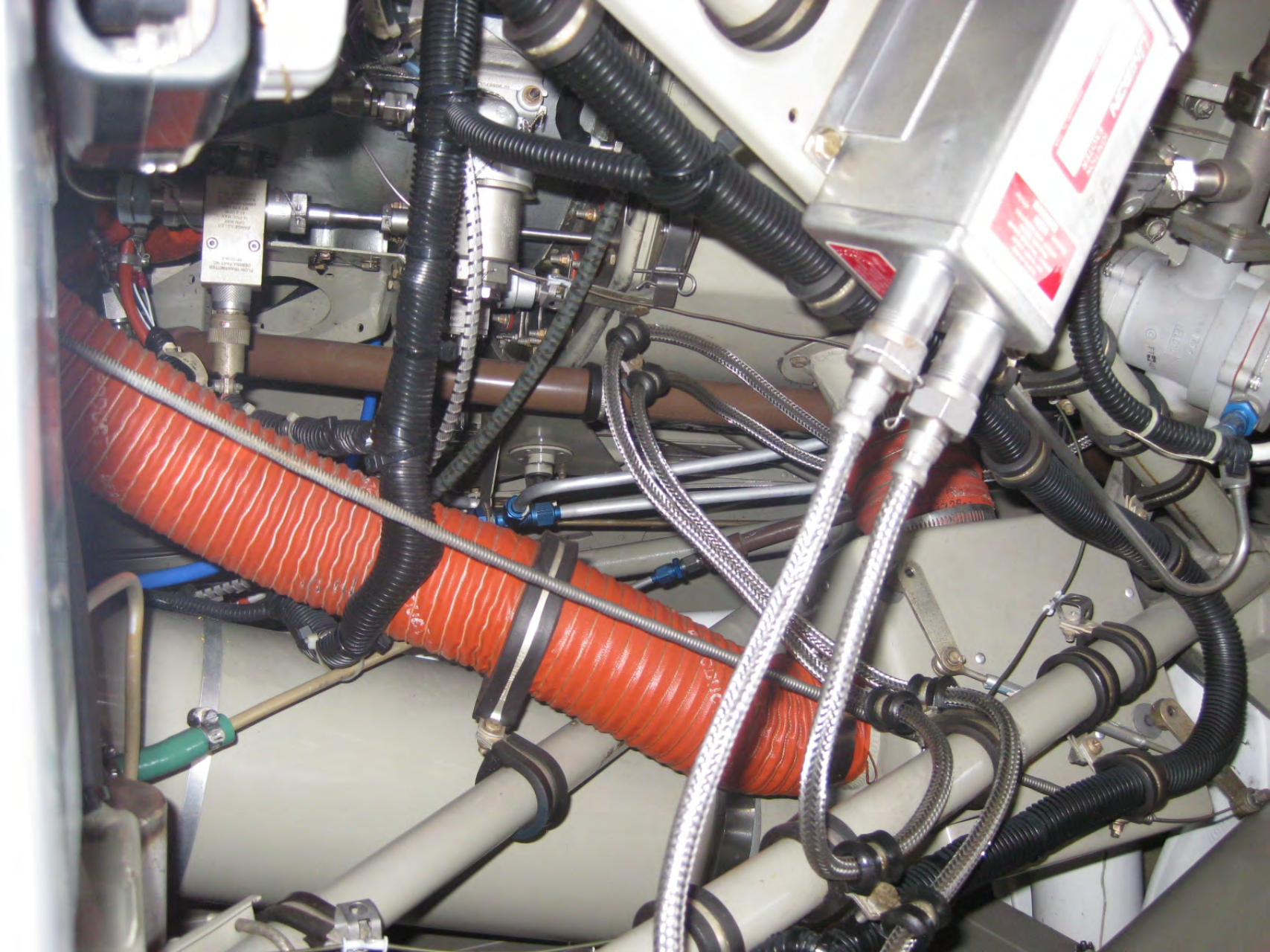
ASTERGÁS Hangar

R-100V











ABERTA  
FECH



LOCK OVERRIDE:  
TO UNLOCK  
PULL & ROTATE  
KNOB  
TO LOCK  
PULL & ROTATE  
KNOB

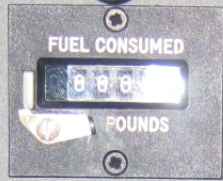


**INSTRUCTIONS**

KEEP UPRIGHT.  
DO NOT SHAKE.  
PULL LEVER.  
AIM AT BASE OF FIRE.  
PRESS LEVER.  
SWEEP SIDE TO SIDE.  
REPEAT UNTIL FIRE IS OUT.

**EXTINTOR DE INCENDIO**  
N.º: C362  
N.º: A-072508  
FABRICADO EM 2004  
TIPO: ABC  
PESO LÍQUIDO: 2,150 kg  
PESO TOTAL: 3,150 kg  
Horas de APT: 2.263,9

ATE 01/07/2016  
H3R Aviation





BENDIX/KING SPEAKER

VOL 1 2 3 4 5 6 7 8 9 10

1 COM 2 COM 3 COM 4 1 NAV 2 DME MKR 1 ADF 2

INTERCOM KMA 24H TSD

SPKR AUTO PA EXT MIC

PULL

BENDIX/KING

ARM VS

ALT SEL

U

FD HD NAV APR REV A.T

ARC 225

KLN 94 TSO GPS

PROC CRSR

PUSH ON BRT

MSG OBC ALT NRCT CLR ENT

USE STBY USE STBY/RAD

KX 165 TSO COMM NAV

PULL TEST

PULL IDENT

USE STBY USE STBY/RAD

KX 165 TSO COMM NAV

PULL TEST

PULL IDENT

BENDIX/KING

MAP WX TRFC TERR AUX

OFF ON

USE STBY/TIMER

KR 87 TSO

BENDIX/KING ADF BFO FRQ FLT/ET SEP/ST OFF VOL

USE STBY/TIMER

KR 87 TSO

BENDIX/KING ADF BFO FRQ FLT/ET SEP/ST OFF VOL

USE STBY/TIMER

KT 70 TSO

BENDIX/KING ADF BFO FRQ FLT/ET SEP/ST OFF VOL

USE STBY/TIMER

HF

FREQ-KHZ CHANNEL MODE FREQ/CHAN

WARNING

DETECT TEST  
LAMP TEST  
NIGHT DAY

VOLTAGE LOW	VACUUM LOW	RESERVOIR FUEL LOW	LEFT FUEL LOW	RIGHT FUEL LOW	STBY ELEC PWR ON	BETA	FUEL SELECT OFF
DOOR WARNING	—	—	—	CHIP DETECTOR	STBY ELEC PWR INOP	—	WINDSHIELD ANTI-ICE

FT-LB X 100

MAX WT. MANEUVER SPEED 150 KIAS  
SEE POH FOR OTHER WEIGHTS

AIR SPEED  
KNOTS  
MPH  
MACH

AIR  
DH  
BENDIX/KING

ALT  
FEET  
IN. HG  
ENCODING

BENDIX/KING

BENDIX/KING

NAV HDG  
DC  
BENDIX/KING

VERTICAL SPEED  
FT/MIN X 1000

GS

+ FREE CW  
- FE W

GPS APPROACH

ELEC  
TUR

OBS

**WARNING**

ASSURE THAT ALL CONTAMINANTS, INCLUDING WATER, ARE REMOVED FROM FUEL AND FUEL SYSTEM BEFORE FLIGHT. FAILURE TO ASSURE CONTAMINANT-FREE FUEL AND HEED ALL SAFETY INSTRUCTIONS AND OWNER ADVISORIES PRIOR TO FLIGHT CAN RESULT IN BODILY INJURY OR DEATH. 070509E-1

INERTIAL S  
BYPASS  
NORMAL

ENG INST  
RADIO

AIR CONDITIONING

COOL LEFT AC FAN AFT HIGH  
OFF VENTILATE

CABIN HEAT

TEMP HOT BLEED AIR HEAT ON MIXING AIR GND-PULL FLT-PUSH  
AFT CABIN-PULL FWD CABIN-PUSH DEFROST-PULL FWD CABIN-PUSH

TRIM

EMERGENCY MAX

Trim

Trim

20-1-0200

20-1-0200

TRIM

MIN

MAX

NO UP

CAUTION

USE BETA AND REVERSE ONLY WITH ENGINE RUNNING AND PROPELLER OUT OF FEATHER

AILERON TRIM

L R

FUEL SHUTOFF PULL OFF

WING FLAPS

15° 10° 20°

ISO 125 KIAS



TOP CENTER  
AFT BAGGAGE PARTITION

ENDED BAGGAGE  
LOAD 100 LBS

BAGAGEIRO EXTENDIDO  
CARGA MAXIMA 45 KG.  
EXTENDED BAGGAGE  
MAX LOAD 100 LBS.  
200502-01



1 EA. E88-100A FAA-PMA  
ADOTWIN INCORPORATED  
FOR INSTALLATION ON ALL  
MODELS OF CESSNA 441

TYPE 854  
PREPARED BY  
AIR CARRIER

**EXTENDED BAGGAGE  
MAX LOAD 100 LBS**

**BAGAGEIRO EXTENDIDO  
CARGA MAXIMA 45 KG.**

**EXTENDED BAGGAGE  
MAX LOAD 100 LBS.**

2605062-40







PR